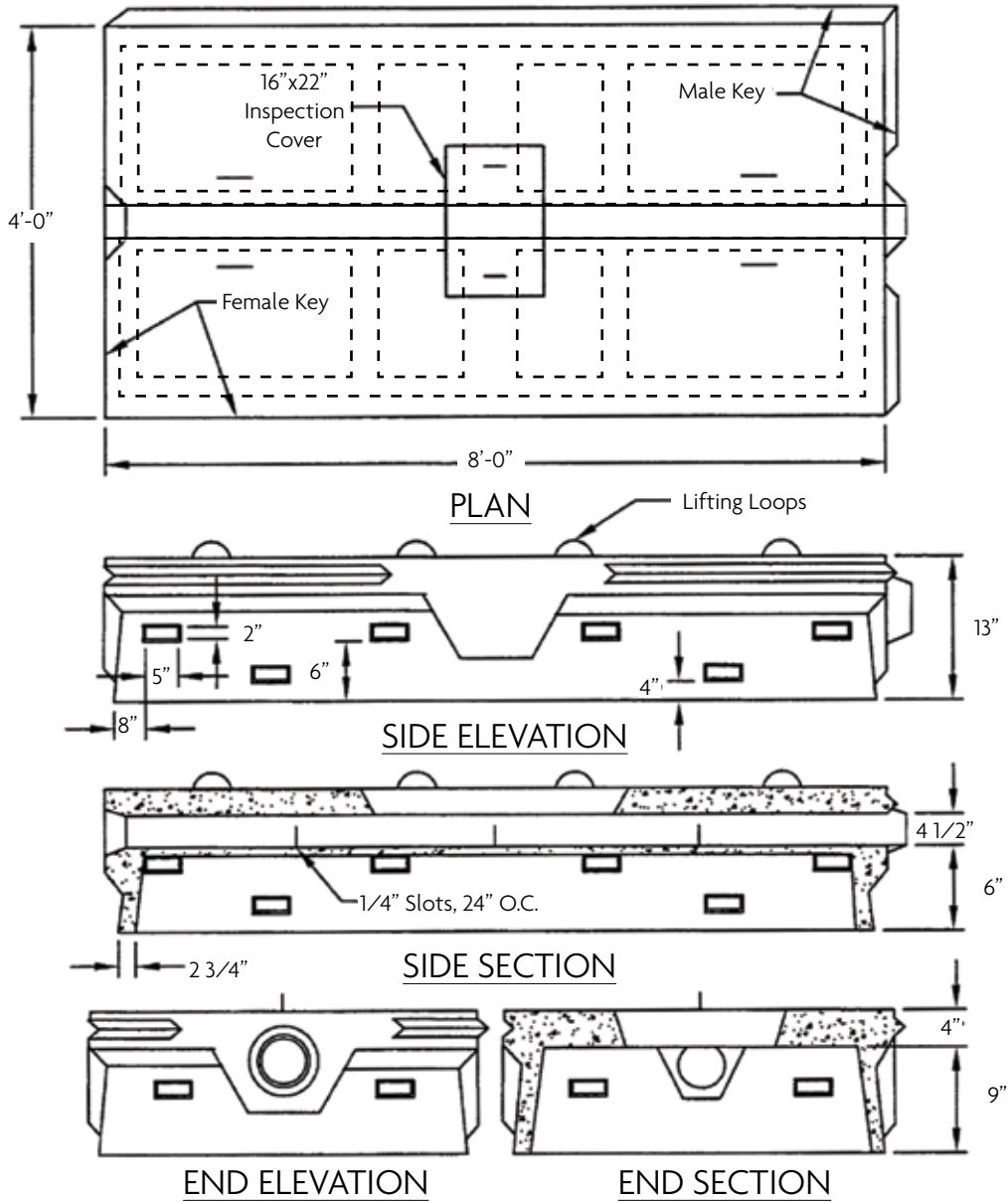


# 4'x8' Flow Diffuser-End Feed (Long Tube)



Weight  
2600 lbs.

**DESIGN NOTES:**

- 1) Concrete Mix Design is 4,000 PSI standard at 28 days, Type 3 Cement
- 2) Reinforcing Steel ASTM A 615, Grade 60. Regular Diffusers reinforced with 6x6 6/6 WWF. Heavy Duty Diffusers reinforced with #4 bars.
- 3) Optional Reinforcement placed to an H-20 design available.
- 4) Provided with 4 each #3 or larger lifting loops and pencil rod handles in Inspection Cover.