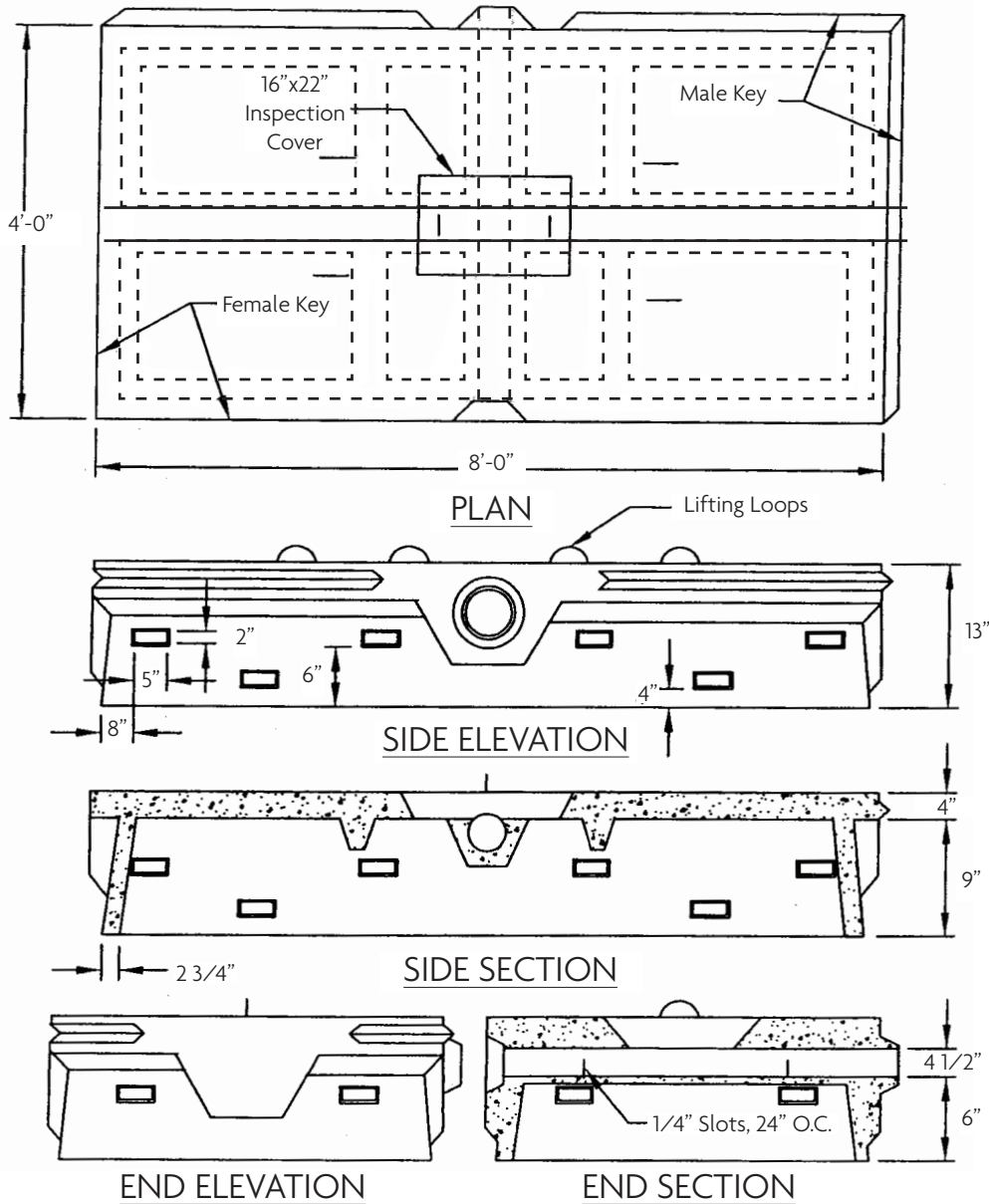


4'x8' Flow Diffuser-Side Feed (Short Tube)



REG. Item #	H-20 Item #	Weight
20862	20867	2600 lbs.

DESIGN NOTES:

- 1) Concrete Mix Design is 4,000 PSI standard at 28 days. Type 3 Cement.
- 2) Reinforcing Steel ASTM A 615, Grade 60. Regular Diffusers reinforced with 6x6 6/6 WWF. Heavy Duty Diffusers reinforced with # 4 bars.
- 3) Optional Reinforcement place to an H-20 design available.
- 4) Provided with 4 each # 3 or larger lifting loops and pencil rod handles in Inspection Cover.