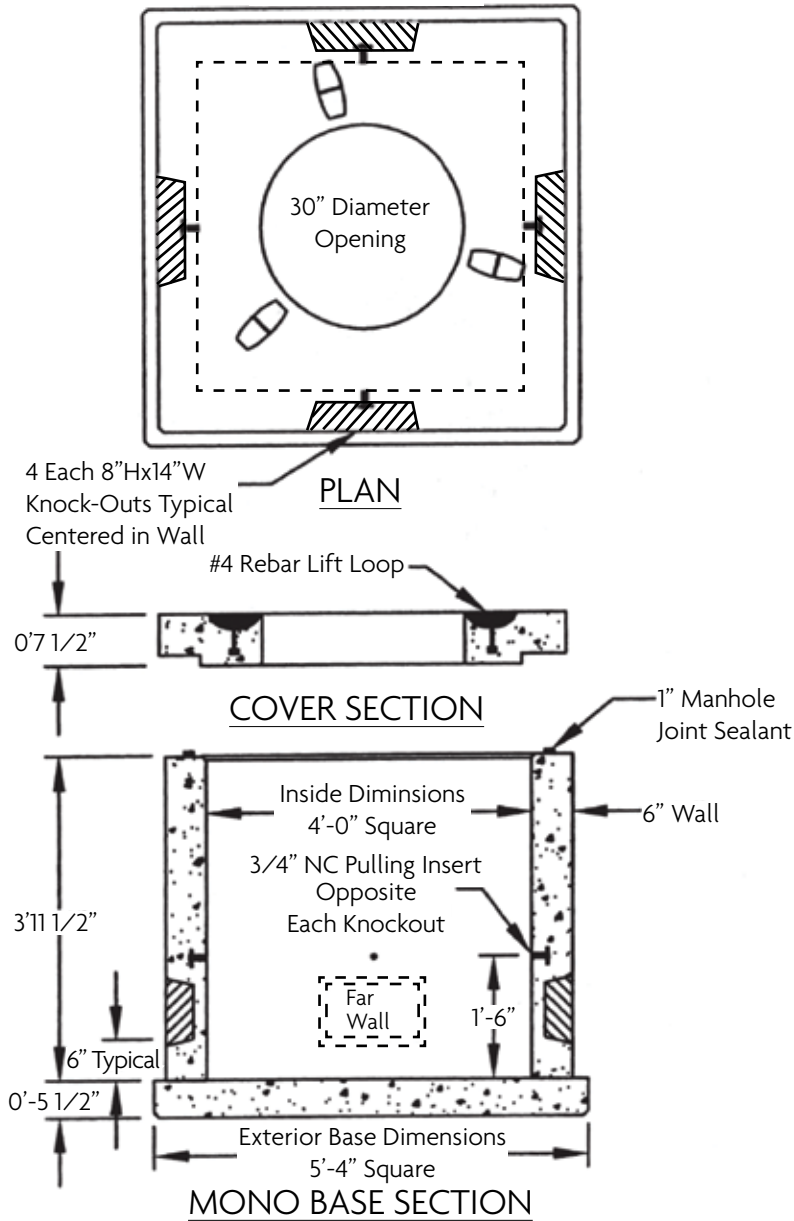


CMP Hand Hole HD 4x4x4

4'x4'x4' Heavy Duty



Component	Weight
Mono-Base	8,000 lbs.
Cover	2,000 lbs.

DESIGN NOTES:

1. Concrete Mix Design is 4,000 PSI standard at 28 days, Type 3 Cement. 5% Air Entrained.
2. Reinforcing Steel ASTM A-615, Grade 60 Placed to a Heavy Duty Design.
3. Cover and Base provided with # 4 Rebar lift loops for handling.