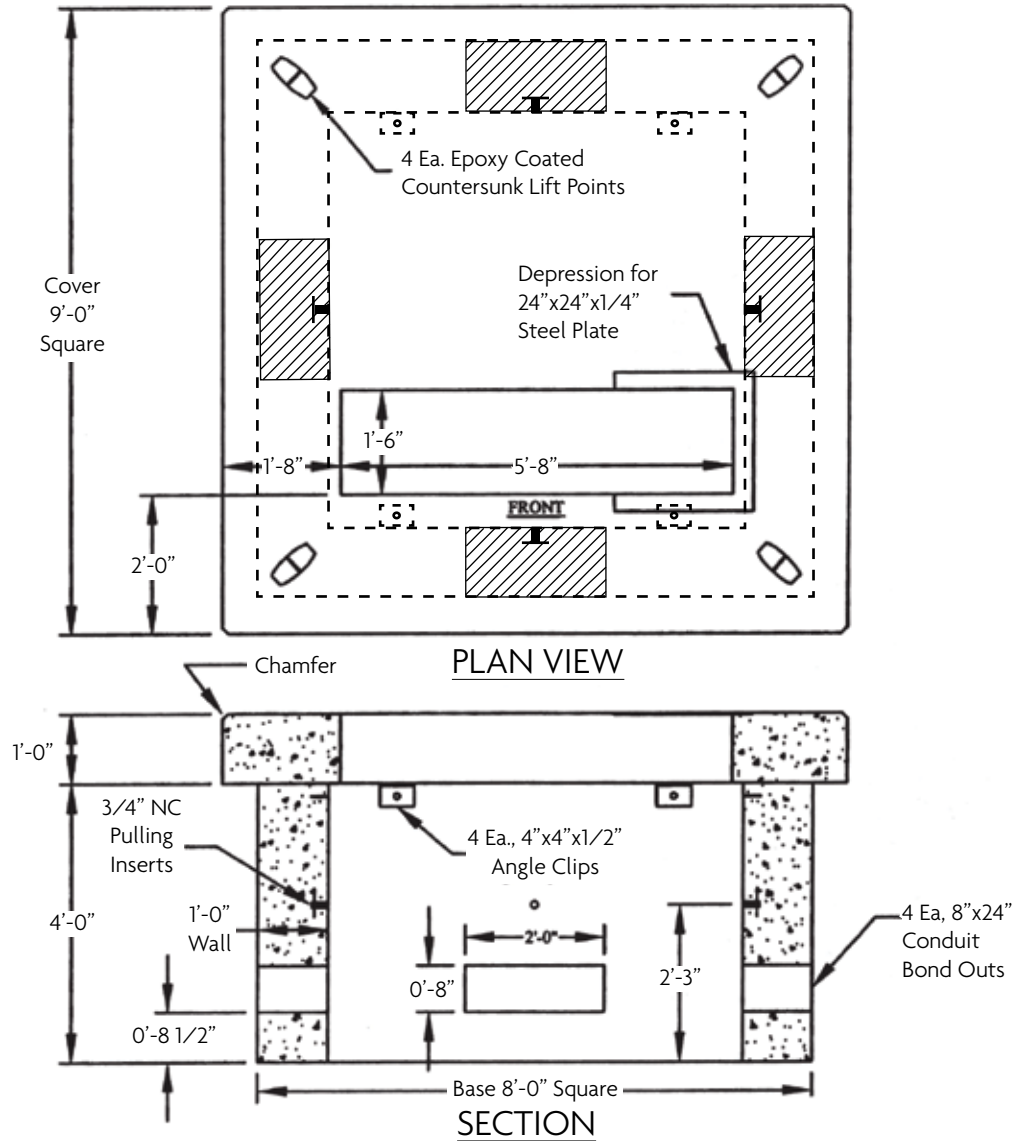


## CMP Three Phase 9x9 Transformer Pad

Three Phase  
Two Piece Precast



Component	Weight	APPLICATION CHART
Base	15,900 lbs.	750 – 2500 KVA – 15 KV
Cover	10,900 lbs.	150 – 2500 KVA – 35 KV

### DESIGN NOTES:

1. Concrete Mix Design is 4,000 PSI standard at 28 days, Type 3 Cement.
2. Reinforcing Steel ASTM A-615, Grade 60.
3. Cover and Base provided with # 4 rebar lift loops for handling