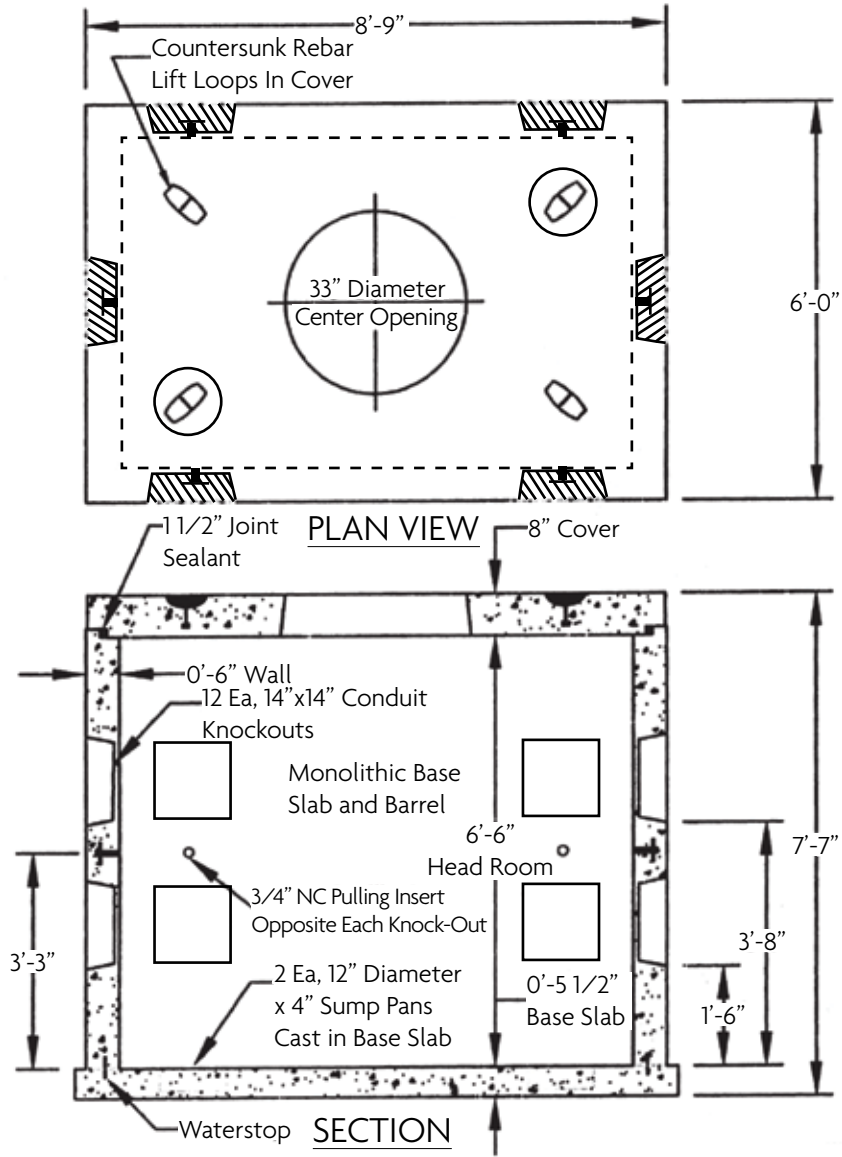


CMP Utility Vault Light Duty 8' 9" x 6' x 6' 6"



Component	Weight
Base	6,500 lbs. / 2,500 lbs.
Cover	2,600 lbs.

DESIGN NOTES:

- Concrete Mix Design is 4,000 PSI standard at 28 days, Type 3 Cement.
- Reinforcing Steel ASTM A-615, Grade 60. Single mat of #4 bars at 8" spacing each way.
- Cover provided with #4 rebar lift loops for handling. Base provided 5/8" countersunk utility anchors for handling.
- Ship lap cover joint sealed with Butyl Sealant.
- Mountings for cable racks or other additional components may be cast in at extra cost. to meet project specific needs.