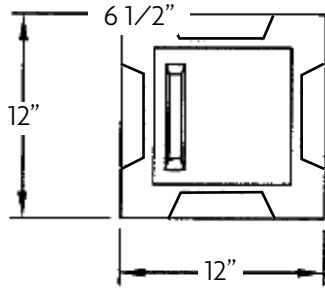
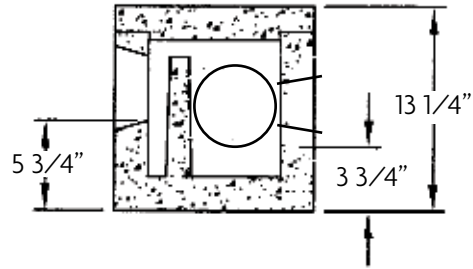


Distribution Box

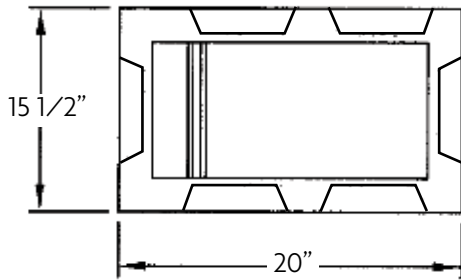


PLAN VIEW

SMALL "D" BOX

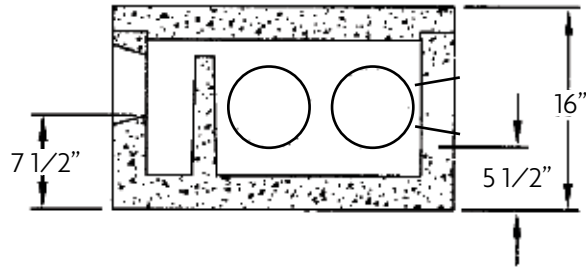


SECTION

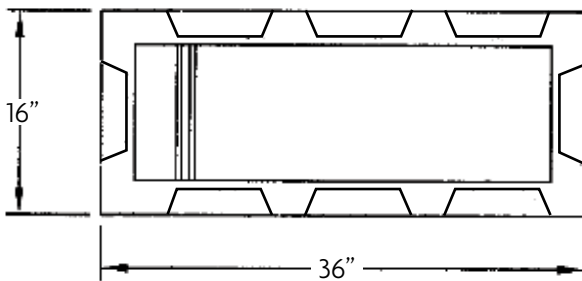


PLAN VIEW

MEDIUM "D" BOX

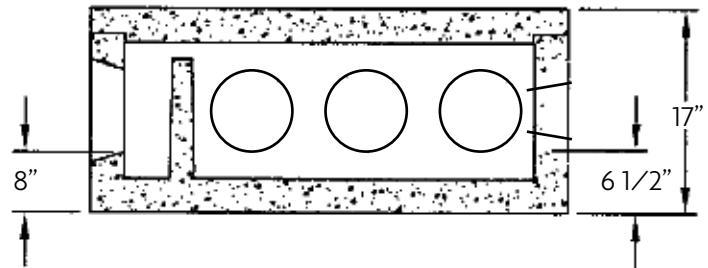


SECTION



PLAN VIEW

LARGE "D" BOX



SECTION

| Size | Inlets | Outlets | Weight |
|----------------|--------|---------|----------|
| Small "D" Box | 1 | 3 | 110 lbs. |
| Medium "D" Box | 1 | 5 | 230 lbs. |
| Large "D" Box | 1 | 7 | 410 lbs. |

DESIGN NOTES:

- 1) Concrete Mix Design is 4,000 PSI standard at 28 days, Type 3 Cement
- 2) POLYLOK PIPE SEALS standard at all penetrations.
- 3) 2" BOTTOM FEED available.