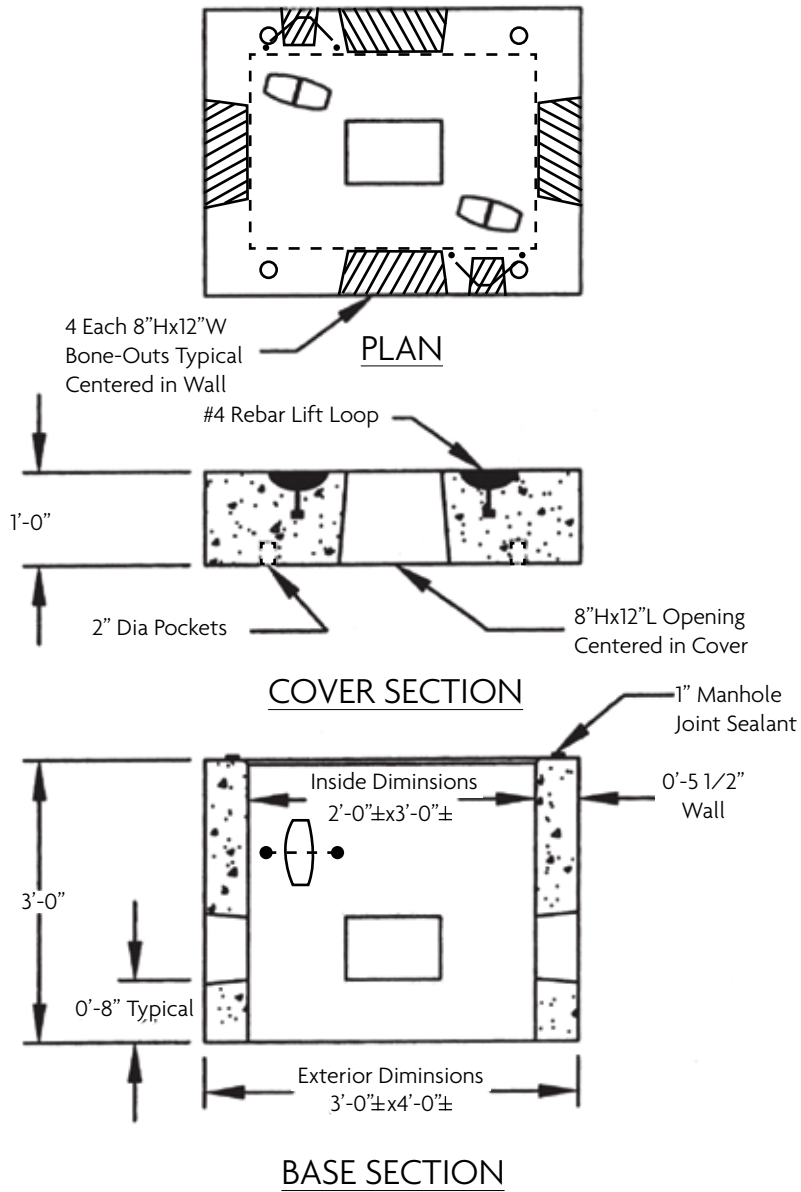


## Electric Hand Hole 3x4x4

3'x4'x4' Heavy Duty



Component	Weight
Base	2,700 lbs.
Cover	1,700 lbs.

**DESIGN NOTES:**

1. Concrete Mix Design is 4,000 PSI standard at 28 days, Type 3 Cement. 5% Air Entrained.
2. Reinforcing Steel ASTM A-615, Grade 60 Placed to a Heavy Duty Design.
3. Cover and Base provided with # 4 Rebar lift loops for handling